

Jump to: [Features](#), [Manual](#) or [FAQ](#)

## Features:

---

- Create a single project to backup multiple folders to a backup drive
- Compatible with all types and sizes of drives
- Backup project runs automatically when you connect the backup drive.
- For drives connected always, Backup (optionally) occurs at regular, configurable intervals.
- Only the modified files and folders are copied during each run. So the backup is both fast AND easy now.
- Optionally the files and folders removed from the source location can be deleted from the backup also.
- No compression, encryption or packaging, so you can browse the backup folders just as you would the source folders.

## Zero Touch Backup

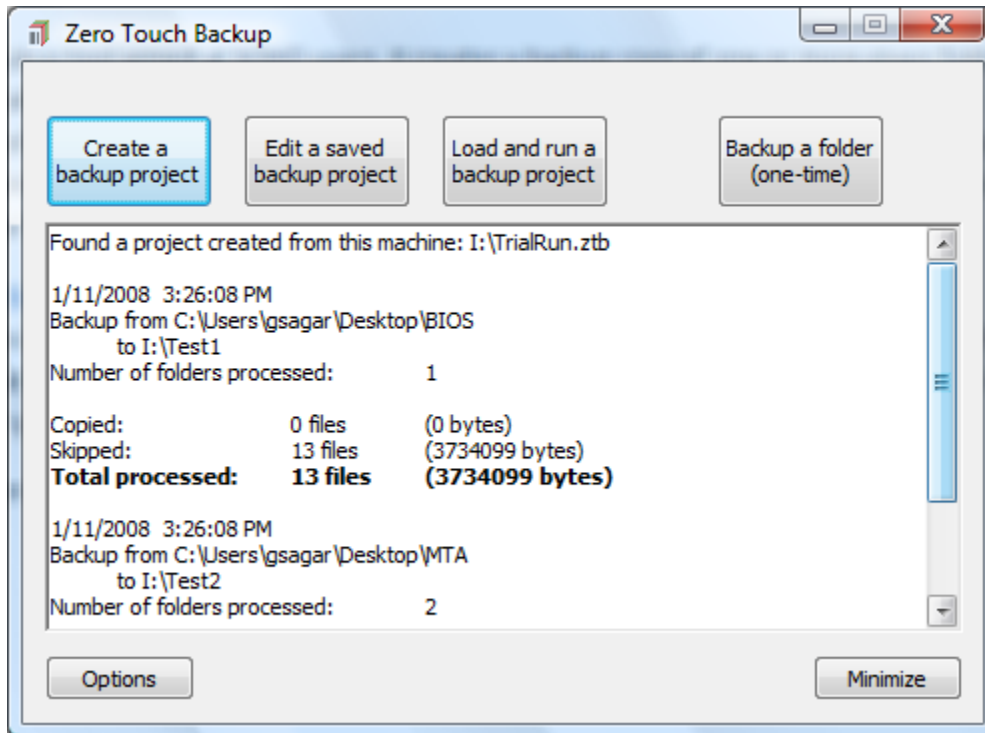
---

ZtB is a backup tool aimed at home and SOHO users. It creates a backup copy of one or more given folders and it automatically updates it whenever the backup drive is connected. When the backup drive is continuously connected, it updates the backup at regular, configurable intervals. The backups are not compressed or encrypted or packaged, so you can browse the backup folder just as you would browse the original folder.

### Installation

Installation is simple and straightforward with the only choice being the destination folder. The installer will also put ZtB in the startup registry entries for the current user so that it is automatically started whenever you user logs in.

## Main screen

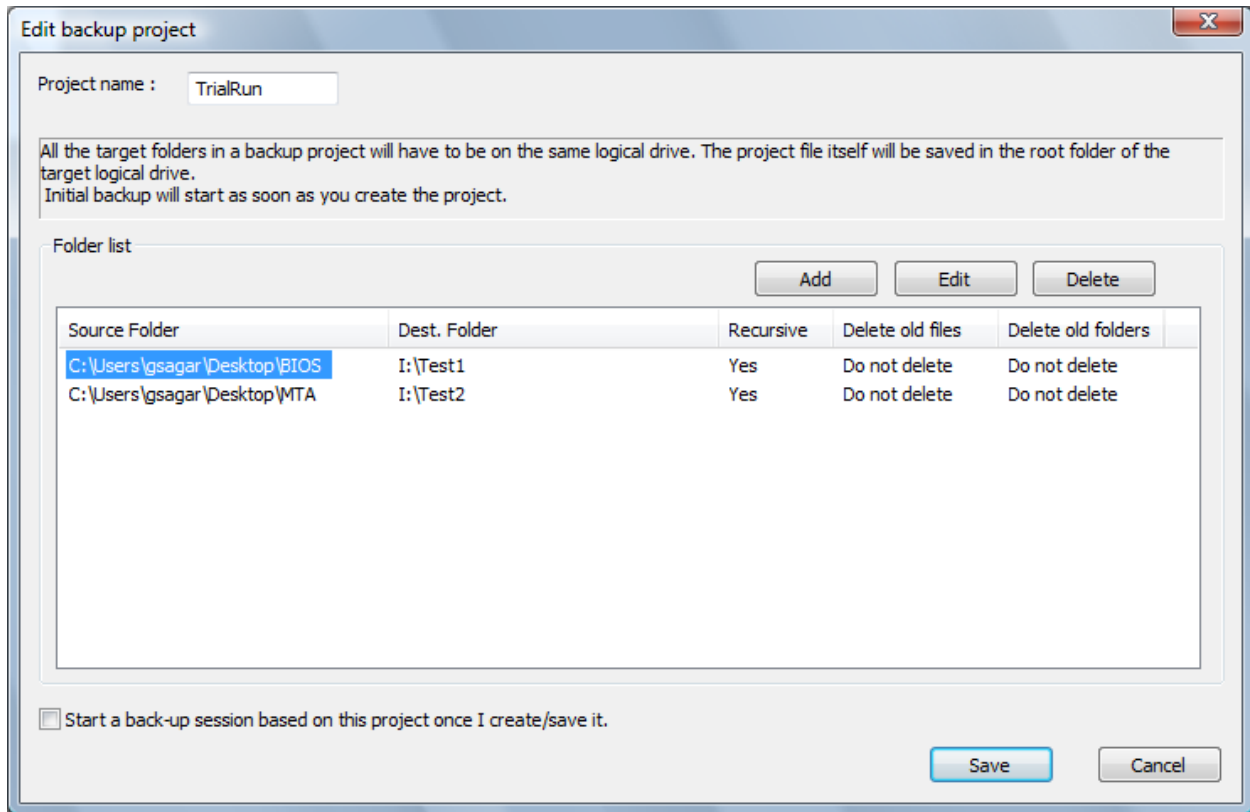


As soon as you run the application, it searches all the available drives (minus floppy, CD and network drives) for any backup projects created from this machine and runs them. It also reschedules those projects according to configuration settings.

From the main screen, you can create/edit/force-run a backup project. You can also do a one-off backup job by using 'Backup a folder (one-time)' button.

## Projects

The project editor looks like this:

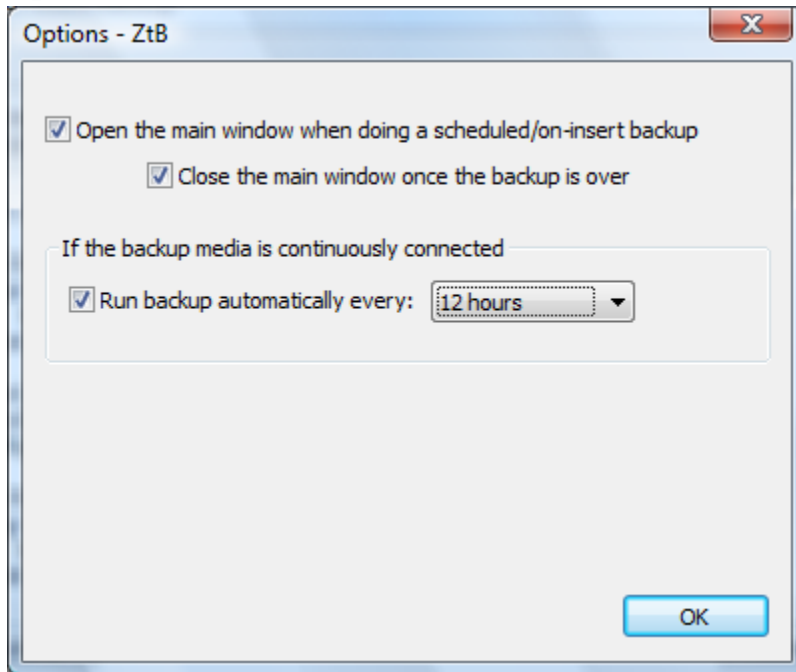


You can add as many folders as you want. The first folder you add decides the backup drive. All the subsequent target folders MUST be on the same drive. The project configuration file itself will be created on the target drive.

The project configuration file also saves a machine ID that prevents the projects created by one machine/user to be opened or used by another machine/user.

Also, since the project file is saved on the target drive, it doesn't matter if the drive letter of the USB drive changes the next time you connect that drive. The application reorients the destination paths using the new drive letter.

## Options



Set your preferences here. The sensible option I believe is that the main window opens up (from minimized-to-system-tray state) when a backup is run, but doesn't close the window once the backup is over (so that you can view the results of the backup session). This is the default value. The default value for scheduler is 'run every 12 hours'.

## FAQ

---

### Do I need any special hardware or any particular type of backup drive?

No. ZtB can use ANY internal or external hard disk drive or flash drive as the backup device. If you are using an external drive, the project will be automatically run every time the drive is connected. For both internal drives and always-connected external drives, the project can (optionally) be run at regular intervals, configurable through options dialog.

### Do you support backup to network drives?

Network drives are currently not supported since we were concerned about the load on the network when ZtB tries to search for a valid project among all the available network drives.

### How is this better than me copying the folders manually?

First, you just need to specify the source and target folders **only once**. The project then runs automatically every time the drive is connected. **You don't even need to run the backup tool OR click on ZtB screen.** Backup starts as soon as you connect the drive to the computer. Second, **only the**

**modified files and folders** are copied. So the backup times (and the drive wear and tear) are greatly reduced.

### **Why is the requirement that all the target folders of a project MUST be in the same drive?**

The project file itself will be created on the target drive, eliminating any other artificial means of associating a particular project with a particular drive. This allows us to support much wider variety of drives than is possible otherwise. If your target folders are spread across different drives, simply create one project for each of those drives. ZtB can handle any number of projects on a given machine.

### **Can I use the same backup drive to backup from different machines? (Won't there be a confusion/conflict)?**

No. The project files will be kept separate (as long as you name them differently) and project created from one machine will not be run on another. Just make sure that you don't backup files from different machines into the SAME target folder.